

Palmac LD pulper can be used for any type of material, from recycled fiber to virgin fiber with consistencies from 4 to 7%, both continuous and batch operation.

Different types of impellers available optimized for energy saving and high pulping efficiency.

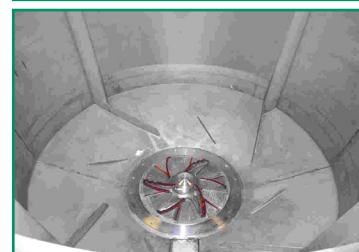
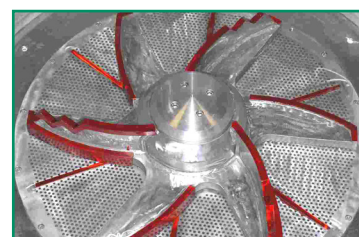
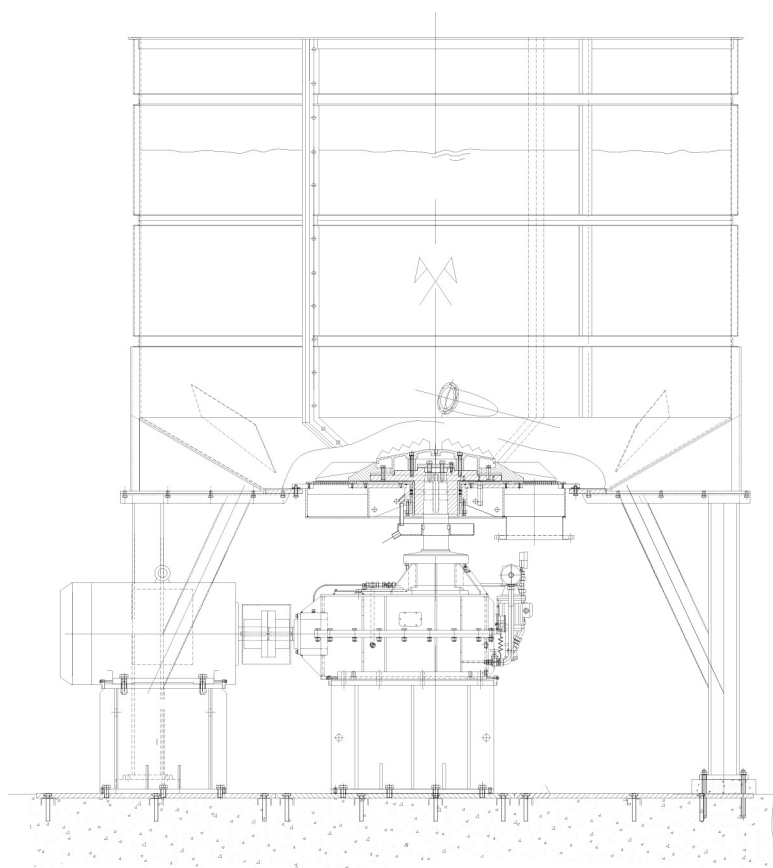
In the case of pulpers for recycled fiber, Palmac pulpers are equipped with the heavy waste removal system by junk trap connected to the pulper and by the Depurger which manages the light waste by sending it to the Rotoscreen (Trommel).

Depending on the application, the internal tank cleaning system can be equipped with a ragger and tail cutter.

Palmac pulpers can be made with belt and pulley control or with a reducer depending on the installed powers.



Net volume (m <sup>3</sup> )	15	20	30	40	50	60	70
Production (t/d)	130	170	250	340	430	510	600
Max installed power (kW)	200	250	355	355	450	500	550



### Giranti disponibili

33" - 840 mm

42" - 1070 mm

50" - 1270 mm

52-3/4" - 1340 mm

55" - 1400 mm

63" - 1575 mm

64,5" - 1708 mm

67,25" - 1708 mm

76,8" - 1850 mm

84" - 2135 mm

86,2" - 2190 mm